



Oakleigh Avenue, Whetstone, N20 9JG  
£2,595,000 Freehold Council Tax Band G

**REAL ESTATES**  
Est.1981

Estate Agents · Residential Sales · Investments · Lettings

Real Estates are delighted to offer for sale this substantial detached family home, providing over 3,400 sq ft of well-proportioned living space. Situated on one of N20's most sought-after roads, Oakleigh Avenue, this impressive property features a stunning 144 ft South-West facing garden and is ideally positioned for excellent local schools, shops, and transport links.

The property is conveniently located just 0.3 miles from Oakleigh Park Overground Station and 0.7 miles from Totteridge & Whetstone Underground Station (Northern Line), offering easy access into central London. The property is offered for sale with no onward chain.

Highlights include the impressive ground floor living space, which opens beautifully in the summer with bi-fold doors, creating the perfect setting for entertaining. The expansive garden provides a peaceful, countryside feel while remaining within easy reach of London and all of Whetstone's local amenities.

Please contact our Totteridge office for further information or to arrange a viewing. Sole Agent.



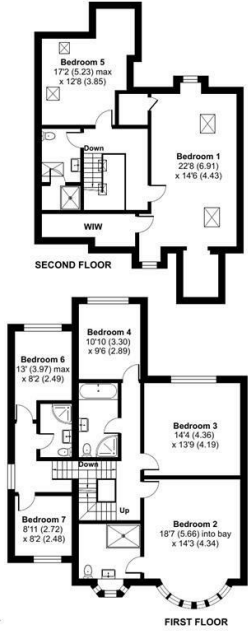
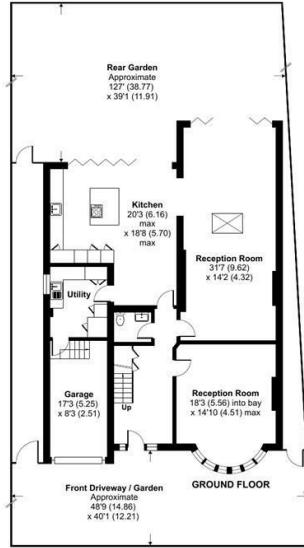




# Oakleigh Avenue, London, N20

Approximate Area = 3295 sq ft / 306.1 sq m  
Garage = 146 sq ft / 13.5 sq m  
Total = 3441 sq ft / 319.6 sq m  
For identification only - Not to scale

Energy Efficiency Rating		Current	Potential
Very energy efficient - lower running costs			
A	92-100		
B	81-91		83
C	69-80	69	
D	55-68		
E	39-54		
F	21-38		
G	1-20		
Not energy efficient - higher running costs			
EU Directive			



Floor plan produced in accordance with RICS Property Measurement 2nd Edition, incorporating International Property Measurement Standards (IPMS2 Residential). © richcom 2026. Produced for Real Estates. REF: 1432888



Real EstatesTotteridge Office:  
32 Totteridge Lane  
Totteridge N20 9QJ

ll : 0208 445 3132  
e : info@realestates-wsp.co.uk  
w : www.realestates-wsp.co.uk